

COMMITTED TO HEALTH EQUITY



COMMUNITY HEALTH AND HEALTH EQUITY

The Brigham and Women's Hospital (BWH) Center for Community Health and Health Equity (CCHHE) is committed to advancing systems of care, research and community programs that elevate the health status of BWH communities. Focus areas include eliminating inequities in infant mortality and cancer care; supporting young parents; promoting youth development and employment through education and career opportunities; and curbing and responding to community, domestic and interpersonal violence. CCHHE approaches its work through a racial equity lens, meaning that its recognition of racism as a root cause of many health inequities shapes how the Center thinks about, pursues, and designs initiatives.

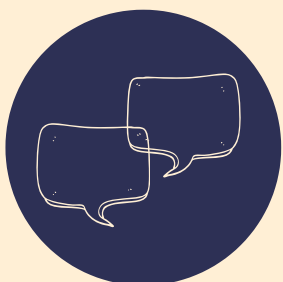


PRIORITY COMMUNITIES

BWH's priority communities include Dorchester, Jamaica Plain, Mattapan, Mission Hill and Roxbury due to their proximity to the hospital and the disproportionate burden of poverty, housing instability, and other social determinants of health in these communities as compared to Boston overall. BWH's priority communities are more racially and ethnically diverse than the city of Boston overall. Mattapan, Roxbury and Dorchester have large Black populations (73%, 52% and 45% respectively) and approximately one-quarter of the populations of Roxbury and Jamaica Plain are Hispanic/Latino (30%, 24% respectively).

COMMUNITY HEALTH CENTERS

BWH's two licensed community health centers, Southern Jamaica Plain Health Center (SJPHC) and Brookside Community Health Center, provide high-quality, patient-centered health care services to Jamaica Plain and surrounding communities. Over 50% of SJPHC patients are Latino. Bilingual English/Spanish medical and professional staff serve over 21,000 patients annually. SJPHC and Brookside Community Health Center are recognized as level III Patient-Centered Medical Homes.



INTERPRETER SERVICES

Boston is a city of many languages. Thirty-eight percent of Boston's population five years of age and older speak a language other than English at home, and this percentage is significantly higher in BWH's priority communities of Dorchester (47%) and Roxbury (46%). BWH provides face-to-face interpreter services for 30 different languages, including American Sign Language (ASL). In FY18, a total of 91,329 interpreter requests were made and completed. Other than English, Spanish and French/Haitian Creole/Cajun are the most commonly spoken languages in BWH priority communities.